

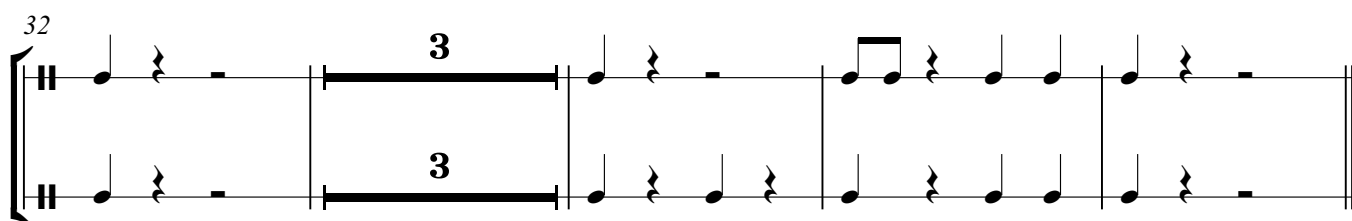
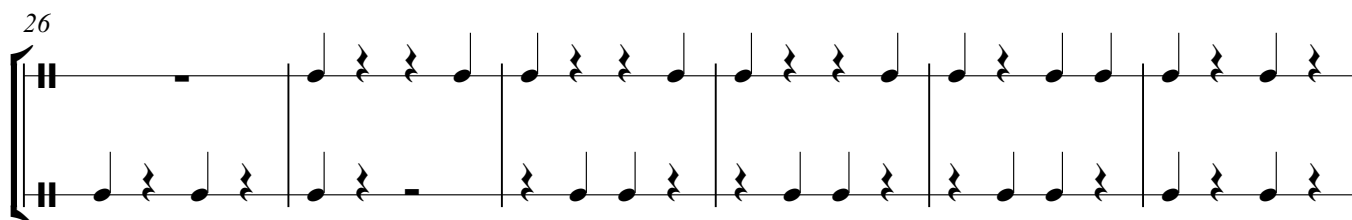
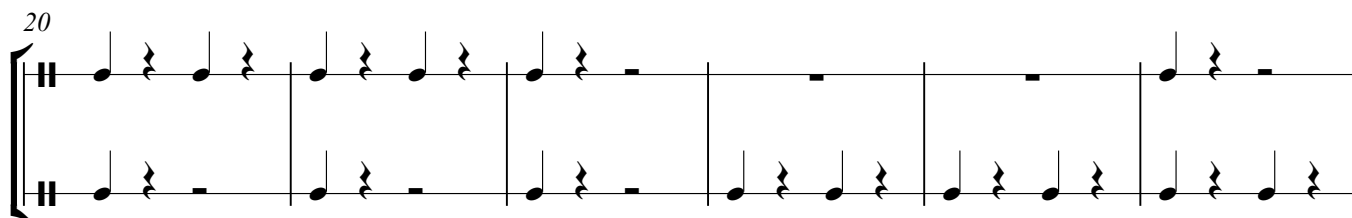
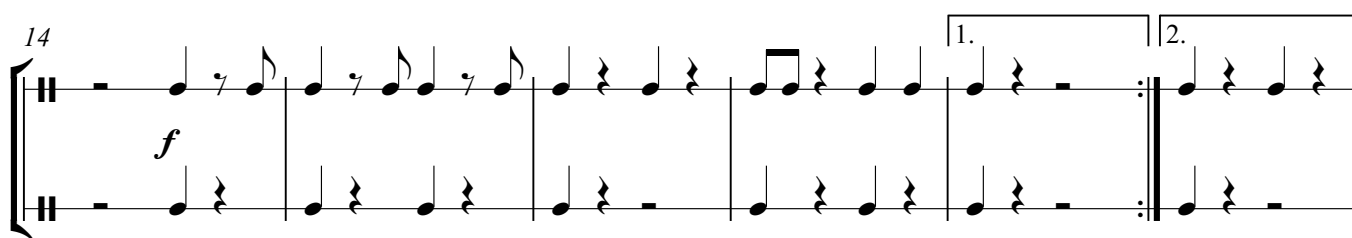
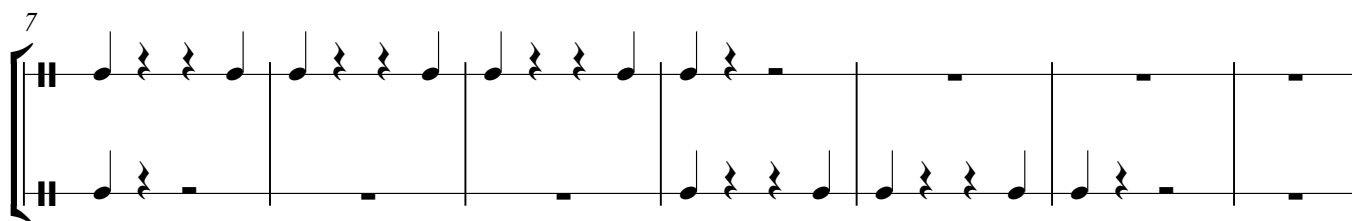
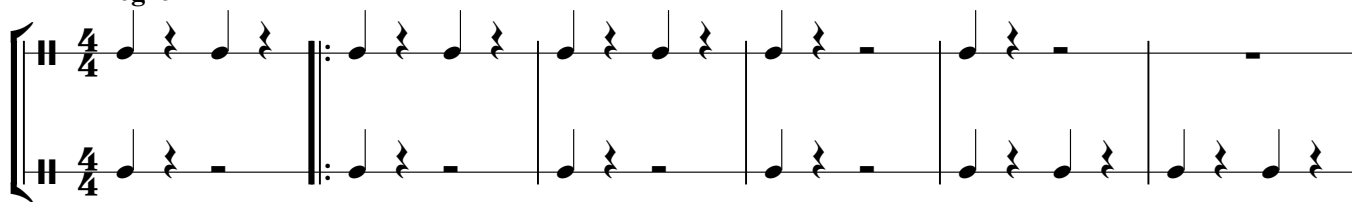
Tamburello  
Triangolo

# Sonata in Re

GT 4.D02

Giuseppe Tartini  
arr. Anna Molaro

**Allegro**



## Allegro assai

Measures 1-8. The score is in 3/4 time. The upper staff (Tamburello) has a treble clef and a key signature of one sharp (F#). The lower staff (Triangolo) has a bass clef and a key signature of one sharp (F#). The tempo is marked 'Allegro assai'. The dynamics are marked *p* (piano) at the end of measure 8. The notation includes eighth notes, quarter notes, and rests, with accents over the eighth notes in measures 1-4.

Measures 9-16. The score continues with the same instrumentation and key signature. The dynamics are marked *f* (forte) at the beginning of measure 9 and *p* (piano) at the end of measure 16. The notation includes eighth notes, quarter notes, and rests, with accents over the eighth notes in measures 9-10.

Measures 17-24. The score continues with the same instrumentation and key signature. The dynamics are marked *f* (forte) at the beginning of measure 17 and *p* (piano) at the end of measure 24. The notation includes eighth notes, quarter notes, and rests, with accents over the eighth notes in measures 17-18.

Measures 25-32. The score continues with the same instrumentation and key signature. The dynamics are marked *f* (forte) at the beginning of measure 25. The notation includes eighth notes, quarter notes, and rests, with accents over the eighth notes in measures 25-26. A double bar line with repeat dots is present at the end of measure 32.

Measures 33-40. The score continues with the same instrumentation and key signature. The notation includes eighth notes, quarter notes, and rests.

Measures 41-48. The score continues with the same instrumentation and key signature. The dynamics are marked *p* (piano) at the end of measure 48. The notation includes eighth notes, quarter notes, and rests.

